

# GLOBAL INSTITUTIONAL PROFILES PROJECT

---

*Times Higher Education  
World University Rankings*



THOMSON REUTERS

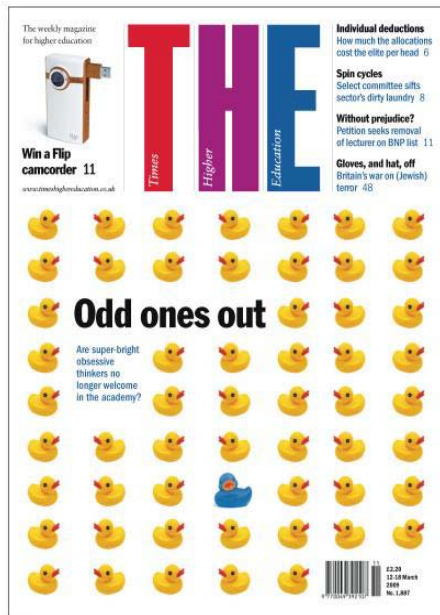
# Introduction & Overview

- The Global Institutional Profiles Project aims to capture a comprehensive picture of academic institutions around the globe
- The first use of this data will be to inform the 2010 *Times Higher Education World University Rankings*.
- Access to the data will be available as a commercial service in 2011



# About Times Higher Education

The weekly magazine for all higher education professionals



# Times Higher Education

---

- In November 2009, Times Higher Education (THE) announced:

*“We have signed an agreement with Thomson Reuters, the world’s leading research data specialist, to provide all the data for our annual World University Rankings from 2010 and beyond. We have decided to end our relationship with QS, who will have no further involvement in Times Higher Education’s annual World University Rankings.”*

- Thomson Reuters will provide the data for the World University Rankings for 2010 and beyond

# Thomson Reuters response

---

- We are carefully listening to stakeholders in institutional evaluation and developing services based on their requirements
- Thomson Reuters do not produce a ranking
- We capture data from various sources and provide expert analysis and interpretation to that data.
- The biggest challenge is to make fair comparisons across international boundaries:
  - Information on a various aspects of performance
  - Subject specific data
  - Information that is valid, relevant and internationally comparable
  - Sensible use of proxies

# Profiles Project – Academic Reputation Survey

---

- In order to clearly understand the reputational standing of universities globally we conducted a carefully designed survey
- Asked academics around the world to give feedback on the reputation of academic institutions, with a clear distinction between the reputation for *Research* and *Teaching*
  - Produced with the help of a 3<sup>rd</sup> party specialist
  - Invitation only to prevent manipulation of results
  - Structured sampling of invitations for regional and subject balance
  - Respondents rate reputation within their own area of expertise
  - Survey was translated into multiple languages to overcome English language bias
  - Post survey analysis per country to overcome regional differences in response rate
- The survey completed in May 2010 with record levels of response

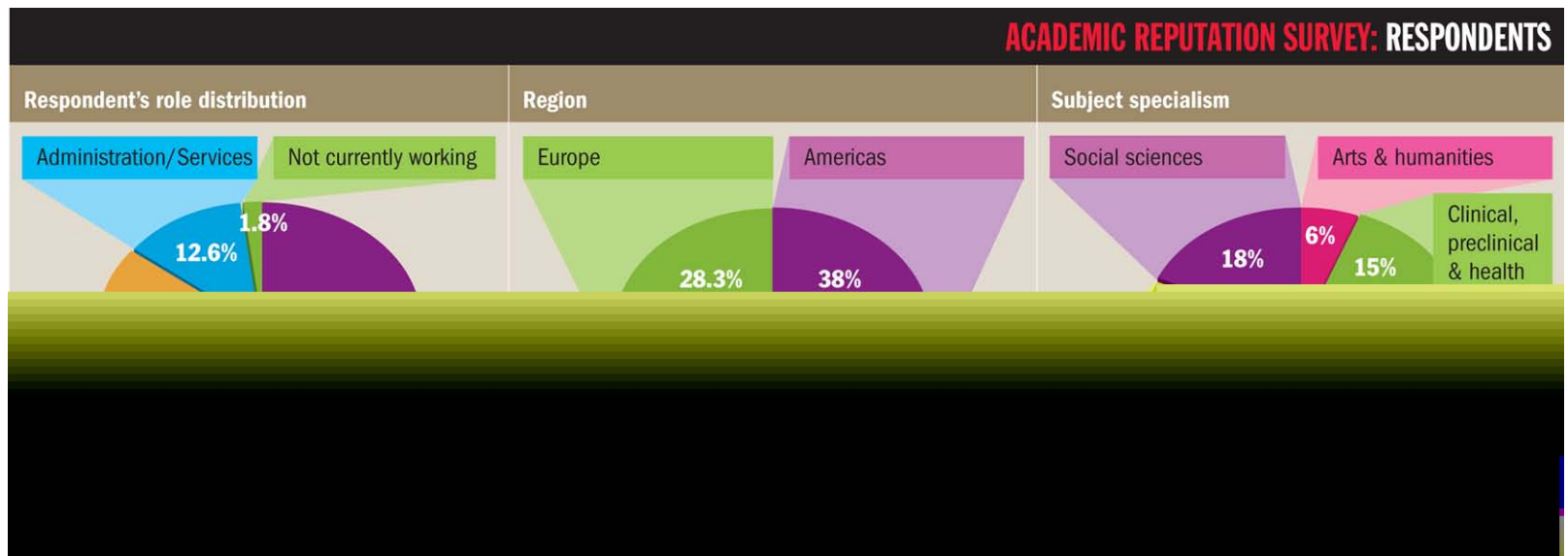
# Reputation Survey results analysis

13,388 responses received

- America 38%
- Africa 4%
- Asia Pacific 30%
- Europe 28%

Mixed function of respondents

- Academic Staff 69%
- Research staff 15%
- Institutional leadership 7%
- Graduate/post grad students 6%



# Profiles Project – Institutional Data Gathering

---

- Collect factual data directly from the participating institutions
- Institutions provide detailed information about their activities across multiple subject areas
- Thomson Reuters has made considerable efforts to collect high quality, comparable data with a minimum work burden for the participating institutions.
  - Use existing data sources when available
  - Common data definitions for all institutions
  - Worked with external advisors to fine tune the definitions and make them comparable across international boundaries
  - Utilizing existing international standards for statistical reporting of education and research (UNESCO & OECD)
  - Strong support structure, documentation, webinars etc.



# Profiles Project – Data Validation

---

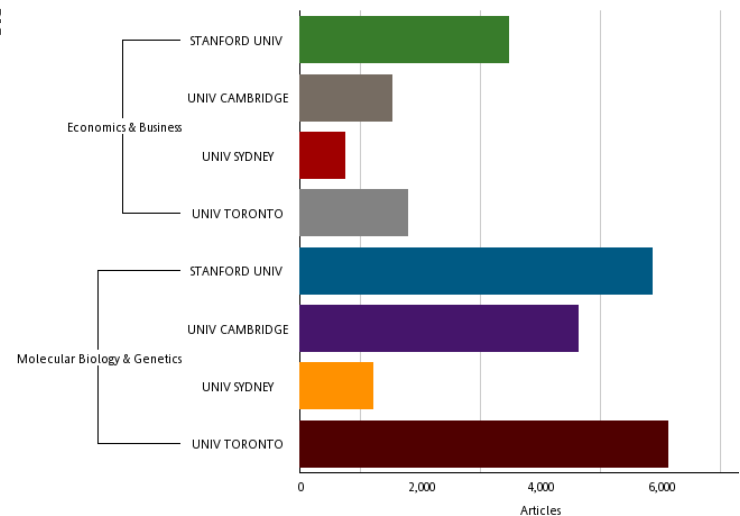
- Data needs to be validated to make sure it is accurate and complete.
  - Cross-check with publicly available data sources
  - Logical data check
  - “Reality” check – identifying outliers and anomalies
- Because this is a new project, there are no prior data collections to make comparisons



# Profiles Project – Institutional Data Gathering

---

- We collect information on the institution's publication activity including the number of articles and citations.
  - Our data source is the *Web of Science*, widely recognised as the gold standard for research evaluation
  - Performed a detailed name unification process conforming to common guidelines for inclusion and exclusion of affiliated institutions.
- We normalised the data to overcome differences in the citation behaviour of different subjects



# Profiles Project – Data Interpretation

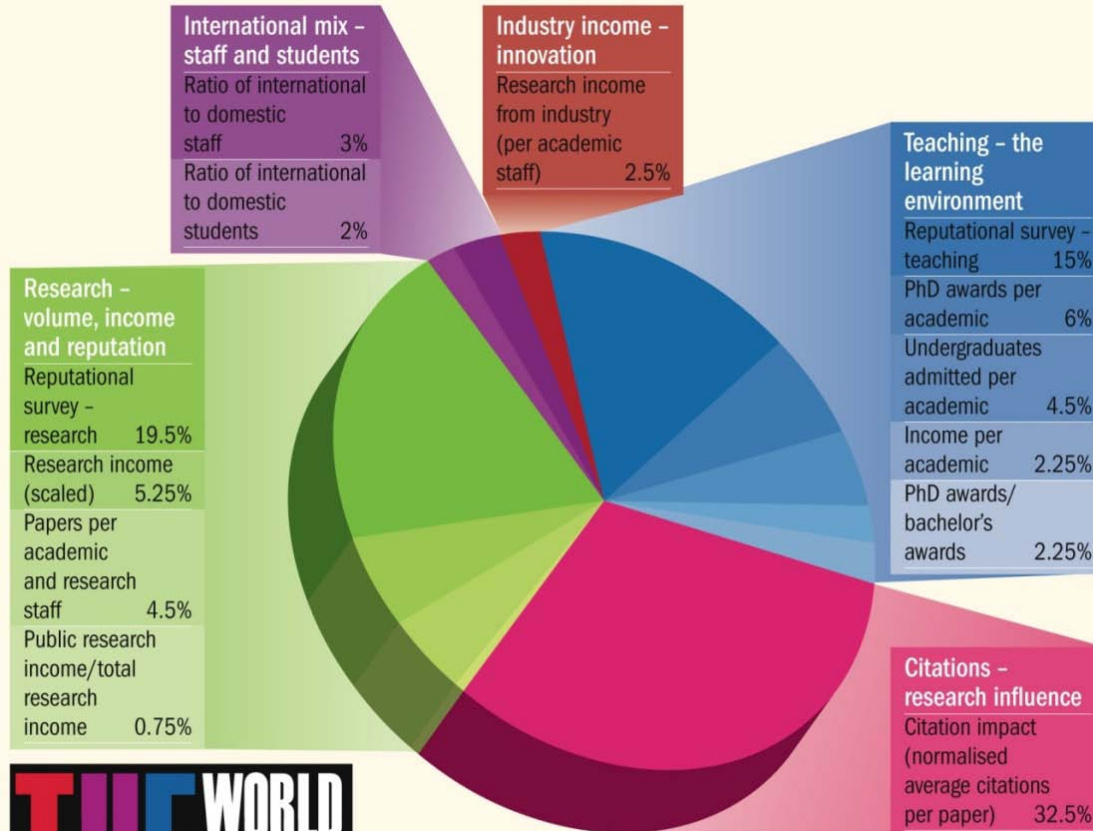
---

- Data, where possible is normalized to create comparability across different fields of study. For example citation impact.
- However, we recognize that there are also differences in other aspects, such as funding.
  - We did not collect enough subject specific data this year to normalize for differences in funding and other areas.
  - We are focusing our efforts to collect this data in more detail.
- We also used Purchasing Power Parity to modify for differences in costs globally.
- We used other regional modifications to overcome regional trends



# World University Ranking – methodology

## WEIGHTING SCHEME FOR RANKINGS SCORES



For the latest World University Rankings news, debate and social networking, see [www.timeshighereducation.co.uk/world-university-rankings/](http://www.timeshighereducation.co.uk/world-university-rankings/)





# Rankings website: <http://bit.ly/thewur>





**Learn From The Top**  
Learn how top universities are using Blackboard's solutions to strengthen their impact on education.

POWERED BY THOMSON REUTERS

Like 1K Tweet 225

---

THE **RANKINGS HOME** TOP 200 BY REGION BY SUBJECT ANALYSIS SUBSCRIBE TO THE iPhone APP

## World University Rankings 2010-2011

Welcome to Times Higher Education's list of the world's top universities for 2010-11.

[Top 200 world universities](#)

**Top universities by region**

- Europe
- Asia
- North America
- South America
- Oceania
- Africa

**Top universities by subject**

- Engineering & Technology (published 22nd September)
- Life sciences (published 30th September)
- Clinical, Pre-clinical & Health (published October 7th)
- Physical sciences (published October 14th)
- Social sciences (published October 21st)
- Arts & Humanities (published October 28th)



Phil Baty  
Editor, THE World University Rankings



THE UNIVERSITY OF HONG KONG  
ASIA'S INTERNATIONAL UNIVERSITY

**Building a WORLD CLASS UNIVERSITY**  
A Times Higher Education and Thomson Reuters conference

NANYANG TECHNOLOGICAL UNIVERSITY


National Tsing Hua University  
國立清華大學


Download the iPhone app

Available on the App Store

**Real-Time Conversation** powered by [Twitter](#) and [tweetoon](#) **140**

Tag Your Tweet:





**Learn From The Top**  
Learn how top universities are using Blackboard's solutions to strengthen their impact on education.

POWERED BY THOMSON REUTERS

Like 27K Tweet 1,536

---

THE RANKINGS HOME **TOP 200** BY REGION BY SUBJECT ANALYSIS SUBSCRIBE TO THE iPhone APP

## THE WORLD UNIVERSITY RANKINGS 2010

WORLD RANK	INSTITUTION	COUNTRY	OVERALL SCORE
1	Harvard University	United States	96.1
2	California Institute of Technology	United States	96.0
3	Massachusetts Institute of Technology	United States	95.6
4	Stanford University	United States	94.3
5	Princeton University	United States	94.2
6	University of Cambridge	United Kingdom	91.2
6	University of Oxford	United Kingdom	91.2
8	University of California Berkeley	United States	91.1
9	Imperial College London	United Kingdom	90.6
10	Yale University	United States	89.5
11	University of California Los Angeles	United States	87.7
12	University of Chicago	United States	86.9
13	Johns Hopkins University	United States	86.4
14	Cornell University	United States	83.9
15	Swiss Federal Institute of Technology Zurich	Switzerland	83.4
15	University of Michigan	United States	83.4
17	University of Toronto	Canada	82.0
18	Columbia University	United States	81.0
19	University of Pennsylvania	United States	79.5

**Cambridge English Advanced**  
Certificate in Advanced English (CAE)

**HIGHLIGHTS FROM THIS WEEK'S THE**  
SIGN UP FOR OUR FREE NEWSLETTER

**Nurturing leaders for tomorrow**  
[www.ntu.edu.sg](http://www.ntu.edu.sg)

**Excellent in Education & Research**

**THE WORLD UNIVERSITY RANKINGS**  
Download the iPhone app

Available on the App Store

**Real-Time Conversation** powered by [Twitter](#) and [tweetoon](#) **140**

Tag Your Tweet:



# KEY CHANGES IN TIMES HIGHER'S 'WORLD UNIVERSITY RANKINGS'

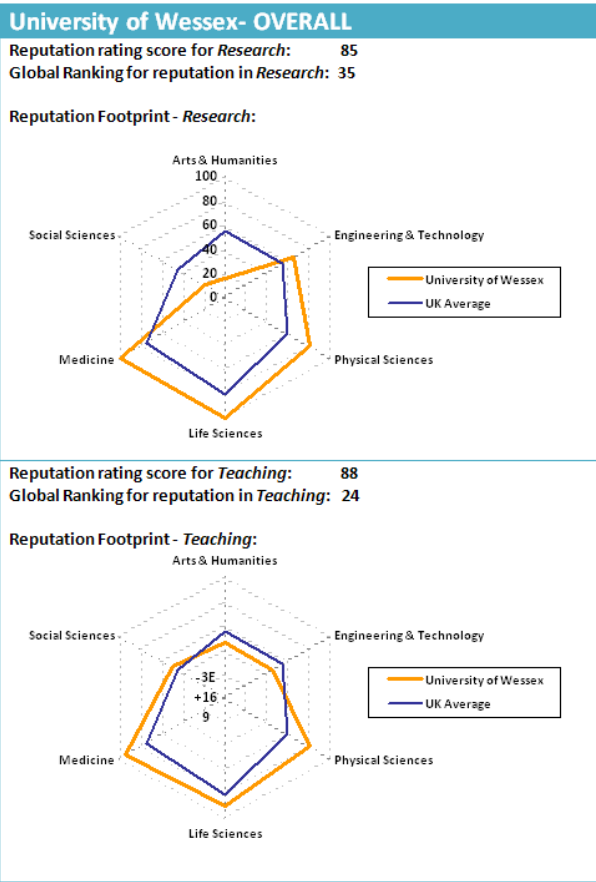
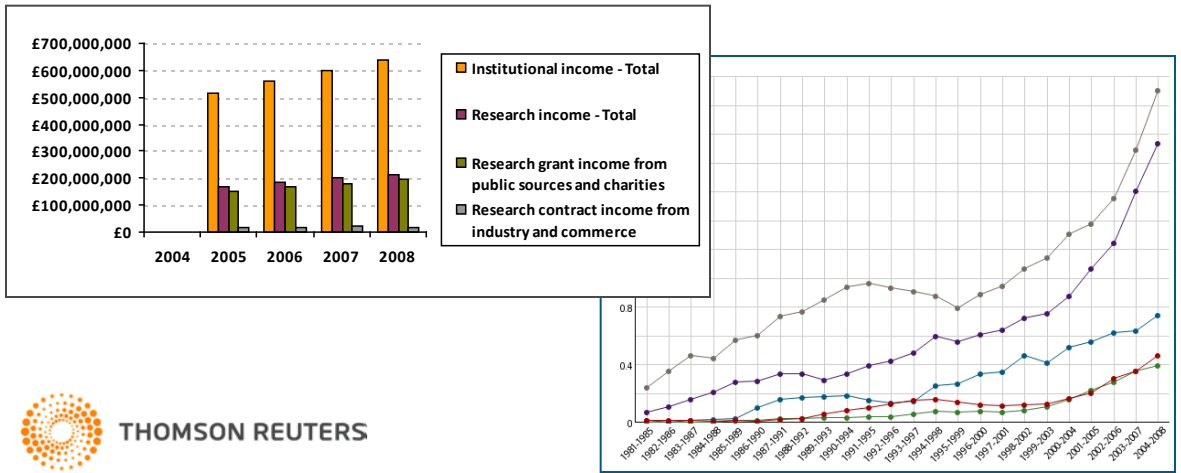
---

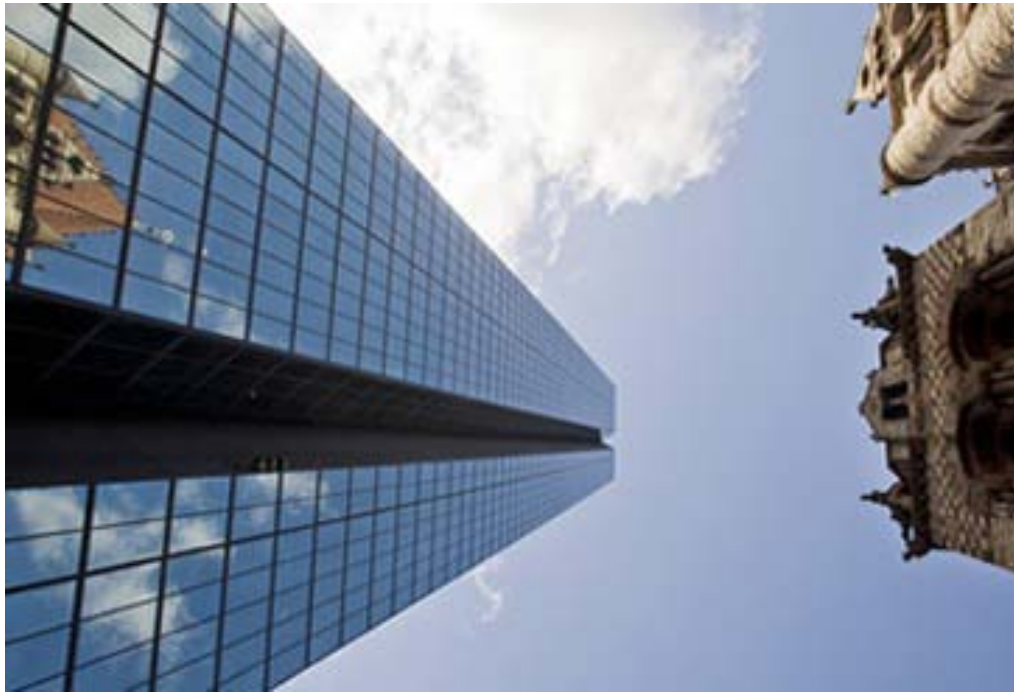
- A more rounded picture than given by 'research power'
  - Research achievement is primary, but we need balance and quality, not volume
- New methodology makes comparisons to other rankings irrelevant
- Resources
- Scale
- Accounting for subject factors
- Accounting for international factors
- We have made major changes and we will build on these in 2011



# Profiles

- The World University Ranking only provide a limited analysis of the universities performance
- Thomson Reuters *Profiles* create an informative picture of the university as a whole and can provide more in-depth analysis and comparison of many different aspects of performance





# THANK YOU

---

**Simon Pratt**  
Project Manager, Institutional Research

[simon.pratt@thomsonreuters.com](mailto:simon.pratt@thomsonreuters.com)



THOMSON REUTERS